

---

# Open Cities to Domestic Thresholds

---

**SARA BARUMEUS**

University of Illinois, Urbana-Champaign

The project wants to reflect the hybridist and the complexity of the context. Poblenou neighborhood in Barcelona is a former industrial urban pattern, now under transformation, characterized by the variability of its built fabric and by the richness of the articulation of the intermediate open spaces between the street and the interior of the block.

Thus, the ensemble is conceived as a huge articulated piece, consisting on five bars of different heights that are related to each other through corridors and collective spaces of different sizes and qualities.

The larger and most continuous bar adds another inflection to the street, widening it up to create an exterior hall to the ground floor, and to resume the direction of the Cerdà layout.

This volume, with almost constant height, contrasts with the uneven height of the rest of the interior volumes, with the same module but minor mass, which are homologous to the ones in their nearest urban context.

The vertical communication cores, located in the articulation between parts, act as hinges between buildings and become the main accesses to both the interior block courtyards.

They are meant to be two different landscapes: a garden for the elderly and an urban patio, accessible from the contiguous public space and bounded by the district facility at the ground level, overlooked by the dwellings for the young people. Elements of an urban scale, large metallic planters, coexist together

with elements of a more domestic scale, closer to the one of the attached terraces and patios, such as pots and cultivation trays grouped on ceramic tiles carpets that delimitate the place for this domesticated agriculture.

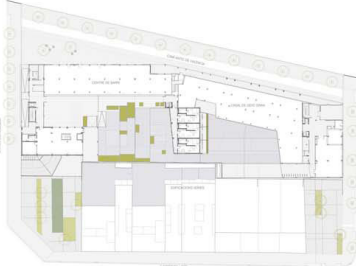
The single-loaded dwelling with corridor, the typology we bet for, turn the accesses to the homes –outdoor walkways for the young ones and indoor galleries for the elderly- in protagonists of these hybrid spaces in transition between the interior and the exterior, between the private and the collective. The building's folds multiply the faces and enhance crossed views of these interior spaces, while fissures in the perimeter allow visual connection with the street, with the exterior.

The minimum dwell extends its threshold to these intermediate spaces between the domestic and the urban, where sliding panels create a certain filter of privacy and allow the resident different appropriations of this collective space, space of opportunity for sharing and exchange.

The complex closes itself to the street with a white carcass, thick and less drilled –that changes the rhythm of the composition of its holes depending of the type of dwelling, the building or the orientation- and opens up to the interior with an explosion of color and a more complex appearance, with a sequence of skins and veils. A pixelated plane, from the lime green at the street to the blues and lilacs that merge with the sky, peeps out behind the fixed and sliding metallic lattices that configure the tense canvas of its latest plane.

164 SOCIAL DWELLINGS for YOUNG PEOPLE and the ELDERLY in POBLENOU, BARCELONA

**OPEN CITIES**  
... TO DOMESTIC THRESHOLDS



The project wants to reflect the hybridist and the complexity of the context. Poblenou neighborhood in Barcelona is a former industrial urban pattern, now under transformation, characterized by the variability of its built fabric and by the richness of the articulation of the intermediate open spaces between the street and the interior of the block.

Thus, the ensemble is conceived as a **huge articulated piece**, consisting on five bars of different heights that are related to each other through corridors and collective spaces of different sizes and qualities.

The larger and most continuous bar adds another inflection to the street, widening it up to create an exterior hall to the ground floor, and to resume the direction of the Cerdà layout.

This volume, with almost constant height, contrasts with the uneven height of the rest of the interior volumes, with the same module but minor mass, which are homologous to the ones in their nearest urban context.

The vertical communication cores, located in the articulation between parts, act as hinges between buildings and become the main accesses to both the **interior block courtyards**.

They are meant to be two different landscapes: a garden for the elderly and an urban patio, accessible from the contiguous public space and bounded by the district facility at the ground level, overlooked by the dwellings for the young people. Elements of an urban scale, large metallic planters, coexist together with elements of a more domestic scale, closer to the one of the attached terraces and patios, such as pots and cultivation trays grouped on ceramic tiles carpets that delimitate the place for this **domesticated agriculture**.

The single-loaded dwelling with corridor, the typology we bet for, turn the accesses to the homes—outdoor walkways for the young ones and indoor galleries for the elderly—in protagonists of these hybrid spaces in transition between the interior and the exterior, between the private and the collective. The building's folds multiply the faces and enhance crossed views of these interior spaces, while fissures in the perimeter allow visual connection with the street, with the exterior.

The minimum dwell extends its **threshold** to these intermediate spaces **between the domestic and the urban**, where sliding panels create a certain filter of privacy and allow the resident different appropriations of this collective space, space of **opportunity for sharing and exchange**.

The complex closes itself to the street with a **white carcass**, thick and less drilled—that changes the rhythm of the composition of its holes depending of the type of dwelling, the building or the orientation— and opens up to the interior with an explosion of **color** and a more complex appearance, with a sequence of **skins and veils**. A pixilated plane, from the lime green at the street to the blues and lilacs that merge with the sky, peeps out behind the fixed and sliding metallic lattices that configure the tense canvas of its latest plane.

